



**SUPPORTING CHILDREN WITH
MEDICAL CONDITIONS
OCTOBER 2025**



SUPPORTING CHILDREN WITH MEDICAL CONDITIONS – OCTOBER 2025

Mission Statement

Our school aims to be a community which reflects real Gospel values of love and forgiveness.

A community in which each individual, child or adult can work and develop in an atmosphere of mutual respect and understanding;

so as to broaden their appreciation of the world, its cultures and its people.

Study - Sanctity – Service



School Motto

Only My Best Will Do. Be Kind To One Another. Amen.



SUPPORTING CHILDREN WITH MEDICAL CONDITIONS – OCTOBER 2025

CONTENTS

DEFINITION	4
POLICY STATEMENT	4
ROLES & RESPONSIBILITIES	6
Governing Body	7
Headteacher	7
All School Staff	8
First Aiders	8
Special Educational Needs & Disabilities Coordinator (SENDCO)	9
Teaching & Support Staff	9
Health Services	9
Parents Carers	10
EMERGENCY PROCEDURES	10
ADMINISTRATION OF MEDICINE	11
Administration - General	11
Administration – Emergency Medication	11
Administration – Admission Forms	11
Administration – Consent	12
STORAGE OF MEDICATION	13
Safe Storage – Emergency Medication	13
Safe Storage – Non-Emergency Medication	13
Safe Disposal	14
SCHOOL MEDICAL REGISTER	14
INDIVIDUAL HEALTHCARE PLANS	15
Use of Individual Healthcare Plans	15
Ongoing Communication & Review of IHP	15
Storage and Access to Individual Healthcare Plans	16
OFFSITE, SPORTING ACTIVITIES & RESIDENTIAL VISITS	16
OTHER RECORD KEEPING	17
UNACCEPTABLE PRACTICE	17
LIABILITY & INDEMNITY	18
COMPLAINTS PROCEDURE	18
LEGISLATION & GUIDANCE	18
POLICY REVIEW	20



SUPPORTING CHILDREN WITH MEDICAL CONDITIONS – OCTOBER 2025

Annexe A: Model Process for IHP 22

Annexe B: Individual Healthcare Plan..... 23

Annexe C: Record of Medicine administered to individual child 25

Annexe D: Staff Training Record – Administration of Medication..... 26

Annexe E: Contacting the Emergency Services..... 27

 Speak clearly and slowly and be ready to repeat information if asked..... 27

Annexe F: Letter to contribute to IHP Review..... 28

Annexe G: Parent Guide 29



SUPPORTING CHILDREN WITH MEDICAL CONDITIONS – OCTOBER 2025

NAMED PEOPLE RESPONSIBLE FOR POLICY IMPLEMENTATION	
NAME	ROLE
Mrs J McCormick	Headteacher
Mrs L McCormick	Assistant Headteacher SENCO
Mrs M Rabbette	Assistant Headteacher Curriculum

DEFINITION

Children's medical needs may be broadly summarised as being of two types:	
SHORT TERM	affecting their participation in school activities while they are on a course of medication.
LONG TERM	potentially limiting their access to education and requiring extra care and support.

POLICY STATEMENT

The Children and Families Act 2014 places a duty on schools to make arrangements for children with medical conditions. The Supporting Children with Medical Conditions in School Policy aims to ensure that the school;

- Meets its statutory responsibilities to manage medicines and medical conditions in line with Government guidance 'Supporting pupils at school with Medical conditions' and the 'Special Educational Needs and Disability Code of Practice: 0-25 years'.
- Implements inclusive practices to support children with medical conditions.
- Aims to provide all children with all medical conditions the same opportunities as others at school.
- Have key staff involved in the care of children with medical needs are fully informed and adequately trained by a professional to administer support or prescribed medication.
- Comply fully with the Equality Act 2010 for children who may have disabilities or special educational needs.
- Writes, where necessary, individual Healthcare Plans in collaboration with healthcare professionals.
- Responds sensitively, discreetly and quickly to situations where a child with a medical condition requires support.
- Keeps, monitors and reviews appropriate records.



SUPPORTING CHILDREN WITH MEDICAL CONDITIONS – OCTOBER 2025

The school will ensure the implementation of the Supporting Medical Conditions in school Policy to meet the following values and principles:

- All children and staff are healthy and stay safe.
- Parents/carers and children feel secure and confident in the school's ability to support their child.
- Children make a positive contribution and are able to access a wide and varied curriculum, including extra-curricular activities.
- Staff understand their duty of care to safeguard children in all aspects of their needs, especially within the event of an emergency.
- Staff are appropriately trained, competent and confident in knowing what to do in an emergency.
- Develop the schools understanding that certain medical conditions are serious and can be potentially life threatening, particularly if ill managed or misunderstood.
- The school understands the importance of medication being taken as prescribed.
- All staff understand common medical conditions that affect children at our school.
- Staff receive training on the impact that medical conditions can have on children delivered by specialist medical staff.



SUPPORTING CHILDREN WITH MEDICAL CONDITIONS – OCTOBER 2025

ROLES & RESPONSIBILITIES

The school is an inclusive community that aims to support and welcome all children including those with medical conditions

- The governing body understands that it has a responsibility to make arrangements for supporting children with medical conditions who currently attend and to those who may attend in the future.
- Children with medical conditions are encouraged to take control of their condition where possible. Children feel confident in the support they receive from the school to help them do this.
- The school aims to provide all children with all medical conditions the same opportunities at school.
- The school aims to include all children with medical conditions in all school activities.
- The school ensures all staff (teaching and support) understand their duty of care to children in the event of an emergency.
- Parents/carers of children with medical conditions feel secure in the care their children receive both in the transportation, school and on educational visits.
- All staff are confident in knowing what to do in an emergency and receive regular training to do so.
- There is knowledge that certain medical conditions are serious and can be potentially life-threatening.
- All staff understand the common medical conditions that can affect all children in school. Staff receive training on the impact this can have on children.

All staff have a sound knowledge, understand their role and are trained to a level that fulfils and informs them in what to do to support children with the most common serious medical conditions found at school and how to uphold the policy.

- All staff at the school are aware of the most common serious medical conditions which they may come across when children are in their care.
- Staff understand their duty of care to children in the event of an emergency. In an emergency situation school staff are required under common law duty of care to act like any reasonably prudent parent/carer. This may include administering medication.
- Parents/carers will be informed if their child has been unwell at school.
- All staff that work directly with children receive training and know what to do in an emergency for the children in their care with medical conditions.
- Training should ensure staff are competent and have confidence in their ability to support children with medical conditions, the school may choose to arrange training and ensure this remains up-to-date.
- The school recognises a first-aid certificate does not constitute as appropriate training for medical conditions.
- Action for staff to take in an emergency for the common serious conditions at the school is displayed in prominent locations for all staff including classrooms, kitchens and the staff room.



SUPPORTING CHILDREN WITH MEDICAL CONDITIONS – OCTOBER 2025

- The school uses the child's Individual Healthcare Plan to inform the appropriate staff (including supply teachers and support staff) of children in their care who may need emergency help.
- The school has procedures in place so that the most up to date/single master copy of the child's Individual Healthcare Plan is sent to the emergency care setting with the child. On occasions when this is not possible, the form is sent (or the information on it is communicated) to the hospital as soon as possible.
- The school has plans in place to cover staff absence and sickness.

Some of the important roles and responsibilities are listed below. These roles are understood and communicated regularly.

Governing Body

The Federation of St Cuthbert's & St Sebastian's Catholic Primary Schools & Field of Dreams Nursery Governing body has a responsibility to:

- Uphold the Equality Act 2010 and make any reasonable adjustments.
- Ensure that arrangements are in place to support children with medical conditions (plans and suitable accommodation). In doing so, they should ensure that such children can access and enjoy the same opportunities at school as any other child.
- Take into account that many of the medical conditions that require support at school will affect quality of life and may be life-threatening and therefore focuses on the needs of the individual child.
- Be aware that in some cases a flexible approach may be required, for example, programmes of study that rely on a part-time attendance in combination with Alternative Provision.
- Consider how the child will be reintegrated back into school after periods of absence.
- Consider that children with medical conditions are entitled to full-time education and should not be denied admission, however, in line with safeguarding duties ensure that no child's health is put at unnecessary risk.
- Make sure the supporting medical conditions in school policy is effectively implemented, monitored and evaluated and updated in line with the school policy review timeline.
- Ensure all parents/carers are fully aware and understand their responsibilities.

Headteacher

The Head Teacher is responsible for:

- Ensuring the school puts the policy into practice and develops detailed procedures and effectively implements them with partners.
- Liaising between interested parties including child, school staff, SENCO, pastoral support staff, teaching assistants, school nurses, parents/carers, governors, the school health service, the Local Authority and local emergency care services and seek advice when necessary.
- Ensuring every aspect of the policy is maintained even if they are not the governing body's nominated staff member.
- Ensuring that information held by the school is accurate and up-to-date and that there are good information sharing systems in place using a child's Individual Healthcare Plan.
- Ensuring a child's confidentiality.



SUPPORTING CHILDREN WITH MEDICAL CONDITIONS – OCTOBER 2025

- Accessing quality assured training, support the development needs of staff and arrange for them to be met via formally commissioned arrangements.
- Ensuring all supply teachers and new staff are briefed and understand the medical conditions policy.
- Each academic year the school will ask for parents/guardians to declare any medical or allergy information. This will be shared in a confidential manner with class, catering and extended school staff.
- Monitoring and reviewing the policy at least once a year, with input from parents/carers, including healthcare professionals) and update according to review recommendations and recent local and national guidance and legislation.
- This information will be available on the statutory policy page of the school website.
- In partnership with the parent/carer, have joint responsibility for the safe travel of the child.
- All staff will have access to appropriate training in order to meet all Healthcare Plans and the Governors will ensure appropriate insurance is in place.

All School Staff

All school staff are responsible for:

- Having an awareness of the potential triggers, signs and symptoms of common medical conditions and knowing what to do in an emergency by receiving whole school awareness training.
- Being aware that medical conditions can affect a child's learning, providing extra help when required.
- Understanding the policy and how these impacts on children's education.
- Knowing which children in their care have a medical condition and be familiar with the content of each child's Individual Healthcare Plan.
- Allowing all children to have immediate access to their emergency medication.
- Maintaining effective communication with parents/carers including informing them if their child has been unwell at school.
- Ensuring children who carry their medication with them have it when they are out of the classroom or on a school visit.
- Being aware of children with medical conditions who may be experiencing any form of bullying or might need extra social support.
- Understanding the common medical conditions and the impact it can have on children.
- Ensuring all children with medical conditions are not excluded unnecessarily from activities they wish to take part in.
- Ensuring children have the appropriate medication or food with them during any forms of exercise and are allowed to take this when needed.

First Aiders

First aiders at the school have a responsibility to:

- Give immediate help to casualties with common injuries or illnesses and those arising from specific hazards within the school environment.
- When necessary ensure that an ambulance or other professional medical help is called.



SUPPORTING CHILDREN WITH MEDICAL CONDITIONS – OCTOBER 2025

Special Educational Needs & Disabilities Coordinator (SENDCO)

The SENCO at the school has responsibility to:

- Support in updating the all school policies relating to SEND, inclusion and medical conditions.
- Know which children have a medical condition and whether they have special educational needs because of their condition.
- Ensure if a child has an Education Health and Care Plan (EHCP) their medical conditions are linked and become a part of this statutory document.
- Be the key member or liaise with other staff to ensure children with medical conditions continue to make expected progress.
- Ensure teachers make any necessary arrangements and reasonable adjustments if a child needs special consideration including access arrangements for exams or coursework.

Teaching & Support Staff

All teaching and support staff at the school have the responsibility to:

- Know which children have a medical condition and whether they have a special educational need because of their condition.
- Monitor children's attendance and punctuality and consider additional support, and in consultation with the SENCO plan for this support.
- Ensure all children with medical conditions are not excluded unnecessarily from activities they wish to take part in.

Health Services

The school nurse and others from the local Health Community and services who work with the school have a responsibility to:

- Cooperate with schools to support children with a medical condition.
- Be aware of the needs and training the school staff need in managing the most common medical conditions at school.
- Provide information about where the school can access other specialist training or alternatively provide training if this has been locally developed.

Other healthcare professionals, including GPs and paediatricians have responsibility to:

- Notify the school nurse when a child has been identified as having a medical condition that will require support at school.
- Provide advice on developing healthcare plans.
- Consider that specialist local health teams may be able to provide support in schools for children with particular conditions (e.g. asthma, diabetes, epilepsy).



SUPPORTING CHILDREN WITH MEDICAL CONDITIONS – OCTOBER 2025

Parents | Carers

The parents/carers of a child at the school have a responsibility to:

- Inform the school if their child has a medical condition.
- Ensure the school has a complete and up-to-date Healthcare Plan for their child.
- Inform the school about and provide the medication their child requires during school hours.
- Inform the school about and provide any medication their child requires while taking part in educational visits or residential visits, especially when these include overnight stays.
- Ensure the school is kept up-to-date with any changes to their child's medication, what they take, when, and how much.
- Inform the school of any changes to their child's condition.
- Ensure their child's medication and medical devices are labelled with their child's full name and date of birth and a spare is provided with the same information (where applicable).
- Ensure that their child's medication is within expiry dates.
- Inform the school if your child is feeling unwell.
- Ensure their child has regular reviews about their condition with their doctor or specialist healthcare professional and any relevant information is relayed to the school.
- Ensure their child has a written care/self-management plan from their doctor or specialist healthcare professional to help their child manage their condition.

EMERGENCY PROCEDURES

All staff understand and are trained in the school's general emergency procedures.

- The school has a general Health and Safety Policy that includes risk assessments and has arrangements in place to deal with emergencies.
- All staff know what action to take in the event of a medical emergency. This includes:
 - *How to contact emergency services and the information they are required to give*
 - *Who to contact within the school.*
- If a child needs to be taken to hospital, a member of staff will always accompany them and will remain with them until a parent/carer arrives. The school tries to ensure that the staff member will be someone the child is familiar with.
- Staff should not take children to hospital in their own car, if it is safer to call an ambulance.



SUPPORTING CHILDREN WITH MEDICAL CONDITIONS – OCTOBER 2025

ADMINISTRATION OF MEDICINE

The school has clear guidance on the administration of medication at school and what is deemed as unacceptable practice.

Administration - General

- The school understands the importance of medication being taken as prescribed.
- All staff are aware there is no legal or contractual duty for any member of staff to administer medication or supervise a child taking medication unless they have been specifically contracted to do so.
- All use of medication defined as a controlled drug, even if the child can administer the medication themselves, is done under the supervision of SLT members of staff at the school.
- There are several members of staff at this school who have been specifically contracted to administer medication (this would be arranged as and when necessary) and would receive the relevant training from healthcare professionals.
- If a trained member of staff, who is usually responsible for administering medication, is not available the school makes alternative arrangements to continue to provide this support.
- For medication where no specific training is necessary, any member of staff may administer prescribed and non-prescribed medication to children under the age of 16, but only with the written consent of their parent/carer.
- Training is given to all staff members who agree to administer medication to children, where specific training is needed. The local authority provides full indemnity.
- Parents/carers at this school understand that if their child's medication changes, is discontinued, or the dose or administration method changes, they should notify the school immediately.
- If a child at this school refuses their medication, staff should not force them but record this and follow procedures set out in the Individual Healthcare Plan. Parents/carers will be informed as soon as possible.
- If a child misuses medication, either their own or another child's, their parents/carers will be informed as soon as possible. These children are subject to the school's usual disciplinary procedures.

Administration – Emergency Medication

- To ensure that medication is administered in a timely manner, the relevant members of staff have easy access to children's medication.
- Due to the age of children, they do not carry their own medication but understand the arrangements for a member of staff to assist in helping them take their medication safely.

Administration – Admission Forms

- Parents/carers at this school are asked if their child has any health conditions or health issues on the admission form. This is renewed at the beginning of each school year.



SUPPORTING CHILDREN WITH MEDICAL CONDITIONS – OCTOBER 2025

- Parents/carers of new children starting at other times during the year are also asked to provide this information on admission forms.
- School is not required to wait for a formal diagnosis before providing support but does require the parent/carer to share all information relating to their child's medical needs. This should be later supported with information provided by healthcare professionals.
-

Administration – Consent

- If a child requires regular prescribed medication at school, parents/carers are asked to provide consent on their child's Individual Healthcare Plan and on the Pupil Medical and Welfare form to give staff permission to administer or support their child in administering medication on a regular/daily basis.
- All parents/carers of children with a medical condition who may require medication in an emergency are asked to provide consent on the Individual Healthcare Plan for staff to administer this medication.
- If a child requires regular/daily help in administering their medication then the school outlines the school's agreement to administer this medication on the Individual Healthcare Plan. The school and parents/carers keep a copy of this agreement.



SUPPORTING CHILDREN WITH MEDICAL CONDITIONS – OCTOBER 2025

STORAGE OF MEDICATION

St Sebastian's Catholic Primary School & Nursery shares responsibility with The Field of Dreams Nursery with regards to safe storage.

There is an identified member of staff who ensures the correct storage of medication (St Sebastian's: Mrs J McCormick | Field of Dreams Nursery: Ms P Scrimshaw)

- If and when controlled drugs were on site due to medical needs, they would be kept in a secure place, which has limited access and can be locked. Medicines and devices such as asthma inhalers, blood glucose testing metres and adrenaline pens should be always readily available to children and stored in their class stock cupboard which is located in their classroom.
- It is the parent's/carer's responsibility to ensure new and in date medication comes into school on the first day of the new academic year and when it expires or a new diagnosis occurs.
- Three times a year the identified members of staff (SLT) check the expiry dates for all medication stored at school.
- The identified members of staff, along with the parents/carers of children with medical conditions, will ensure that all prescribed emergency and non-emergency medication brought into school is clearly labelled with the child's name, the name and dose of the medication and the frequency of dose. This includes all medication that children carry themselves. (N/A as we are a primary school).
- All medication is supplied and stored in its original containers/packages. All prescribed medication is labelled with the child's name, date of birth, the name of the medication, expiry date and the prescriber's instructions for administration, including dose and frequency.
- Medication will be stored in accordance with instructions, paying particular note to temperature.
- Some medication for children at this school may need to be refrigerated. All refrigerated medication is clearly labelled. Refrigerators used for the storage of medication are in a secure area that is only accessible to staff.
- All medication is collected by a parent at the end of the school year. Medication is not stored in summer holidays.

Safe Storage – Emergency Medication

- Emergency medication is readily available to children who require it at all times during the school day or at off-site activities. If the emergency medication is a controlled drug and needs to be locked up, the keys are readily available from the school office and not held personally by members of staff.
- Where the child's healthcare professional advises that they are not yet able or old enough to self-manage and carry their own emergency medication, they know exactly which members of staff are able to support them in safely accessing their emergency medication.

Safe Storage – Non-Emergency Medication

- All non-emergency medication is kept in a secure place, the keys are readily available from the school office and not held personally by members of staff.
- Staff ensure that medication is only accessible to those for whom it is prescribed.



SUPPORTING CHILDREN WITH MEDICAL CONDITIONS – OCTOBER 2025

Safe Disposal

- Parents/carers will be asked to collect out-of-date medication.
- If parents/carers do not pick up out-of-date medication, or at the end of the school year, medication is taken to a local pharmacy for safe disposal.
- SLT will arrange for the disposal of any medication that has expired.
- Sharps boxes are used for the disposal of needles. Parents/carers obtain sharps boxes from the child's GP or paediatrician on prescription. All sharps' boxes in school are stored in a locked cupboard unless alternative safe and secure arrangements are put in place on a case-by-case basis. Arrangements should be made for their safe disposal.
- If a sharps box is needed on an off-site or residential visit a named member of staff is responsible for its safe storage and returns it to school or the child's parent.

SCHOOL MEDICAL REGISTER

- Parents | Carers share any medical conditions on the Pupil Medical and Welfare Form. All pupils with a medical condition are then listed on Vulnerability Overviews. Some of the children listed here may also require an Individual Healthcare Plan however, not all children with medical conditions will need an individual plan.
- Mrs J McCormick (Headteacher) and the Senior Leadership Team have responsibility for the medical register at school.
- Parents | Carers are also responsible for ensuring that details on a child's Individual Healthcare Plan are accurate and that any permission for administration of medication is sought and documented.



SUPPORTING CHILDREN WITH MEDICAL CONDITIONS – OCTOBER 2025

INDIVIDUAL HEALTHCARE PLANS

- An individual Healthcare Plan may be initiated by a member of school staff. Plans should be drawn up with the input of healthcare professionals e.g. Specialist Nurse and parents/carers with the child.
- As a sign of good practice, St Sebastian's will use Individual Healthcare Plans to record important details about individual children's medical needs at school. Additional information relating to a child's triggers, signs, symptoms and /or medication will be used to identify the level of support they need. Further documentation can be attached to the Individual Healthcare Plan if required.
- The level of detail within the Individual Healthcare Plan will depend on the complexity of the condition and the degree of support needed.
- An Individual Healthcare Plan, accompanied by an explanation of why and how it is used, is sent to all parents/carers of children with a long-term medical condition. This is sent at each annual review date, on admission to school and when a diagnosis is first communicated to the school.
- Each academic year, parents / carers complete a 'Pupil medical & welfare form' where they share any medical conditions / allergies. Parents / carers will give permission for their child to receive medication, administered by a member of staff. A page within an 'Administration of medication record book' will be completed and shared with parents / carers at the end of the school day. This is completed as a record of administration and is stored in the Headteacher's room. These books are archived at the end of each academic year.

Use of Individual Healthcare Plans

Individual Healthcare Plans are used by the school to:

- inform the appropriate staff and supply teachers about the individual needs of children with a medical condition in their care
- remind children with medical conditions to take their medication when they need to and, if appropriate, remind them to keep their emergency medication with them at all times
- identify common or important individual triggers for children with medical conditions at school that bring on symptoms and can cause emergencies. The school uses this information to help reduce the impact of common triggers
- ensure that all medication stored at school is within the expiry date
- ensure this school's local emergency care services have a timely and accurate summary of a child's current medical management and healthcare in the event of an emergency
- remind parents/carers of a child with medical conditions to ensure that any medication kept at school for their child is within its expiry dates. This includes spare medication.

Ongoing Communication & Review of IHP

- Parents/carers at this school are regularly reminded to update their child's Individual Healthcare Plan if their child has a medical emergency, there have been changes to their symptoms (getting better or worse), and if their medication, treatments or conditions change.
- Staff at school use opportunities to invite parents/carers to review and check information held by the school on a child's condition is accurate and up-to-date.
- Every child with an Individual Healthcare Plan at this school has their plan discussed and reviewed at least once a year.



SUPPORTING CHILDREN WITH MEDICAL CONDITIONS – OCTOBER 2025

- Where the child has SEND, the Individual Healthcare Plan should be as part of the graduated approach of Assess, Plan, Do, Review and/or linked to their statement or Education Health and Care Plan if they have one.

Storage and Access to Individual Healthcare Plans

- The school ensures that all staff protect confidentiality.
- Individual Healthcare Plans are stored electronically on CPOMS (secure computer programme) and paper copies are discretely displayed in the child's class (inside stock cupboards accessible by adults only) in the school office and in the school kitchen (if appropriate).
- All members of staff who work with groups of children will access the Individual Healthcare Plans to provide support with their planning of teaching and learning.
- When a member of staff is new to a class, for example due to staff absence, the school makes sure that the new staff member is made aware of (and has access to) the Individual Healthcare Plans of children in their care.
- The school seeks permission from parents/carers to allow the Individual Healthcare Plan to be sent ahead to emergency care staff, should an emergency happen during school hours or at a school activity outside the normal school day. This permission is included on the Individual Healthcare Plan.

OFFSITE, SPORTING ACTIVITIES & RESIDENTIAL VISITS

- Parents/carers are sent a residential visit form to be completed and returned to school before their child leaves for an overnight or extended day visit. The form is used to ensure up-to-date information about the child's current condition and their overall health is known. This is vital for providing the staff with the necessary information to manage the child's condition while they are away, including relevant medication not normally taken during school hours. Healthcare professionals, where required, will be involved in the planning of care required during residential visits.
- When attending a residential visit or off-site activity (including sporting events) the lead staff member will have copies of all visit paperwork including risk assessments for children where medication is required. A copy of the Individual Healthcare Plan will accompany the child if necessary and reference should be made to any medical conditions in the planning and risk assessment prior to the visit taking place.
- All parents/carers of a child with a medical condition attending an off-site activity or overnight residential are asked to provide written consent, giving staff permission to administer medication if required if an Individual Healthcare Plan has not been drawn up.
- The residential visit form details what medication and dose the child is currently taking at different times of the day. It helps to provide up-to-date information for relevant staff and supervisors to help the child manage their condition while they are away.



SUPPORTING CHILDREN WITH MEDICAL CONDITIONS – OCTOBER 2025

OTHER RECORD KEEPING

- The school keeps an accurate record of each occasion an individual child is given or supervised taking medication. Details of the supervising staff member, child, dose, date and time are recorded. If a child refuses to have medication administered, this is also recorded and parents/carers are informed as soon as possible.
- The school holds regular training on common medical conditions. A log of the medical condition training is kept by the school and reviewed every 12 months to ensure all new staff receive training.
- All school staff who volunteer or who are contracted to administer medication are provided with training by a healthcare professional. The school keeps a record of staff who have had training.

UNACCEPTABLE PRACTICE

The school uses its discretion and professional judgement on individual cases but it is not generally acceptable practice to:

- Prevent children from accessing their medication.
- Assume that every child with the same condition requires similar or the same support.
- Ignore the views of the child or their parents/carers.
- Ignore medical advice.
- Send children home frequently or prevent them from staying for school activities.
- Send a child unaccompanied to the school office if they become ill.
- Prevent children with medical conditions accessing the full curriculum, unless specified in their Individual Healthcare Plan (IHP).
- Penalise their attendance records if their absences are related to their medical condition and appropriate evidence is provided e.g. hospital appointments.
- Prevent children from eating, drinking or taking toilet breaks where this is part of effective management of their condition.
- Require parents/carers or make them feel obliged to attend school to administer medication or provide medical support where this interrupts their working day.
- Prevent or create unnecessary barriers to children participating in any aspect of their educational experience, this includes school visits, e.g. requiring the parents/carers



SUPPORTING CHILDREN WITH MEDICAL CONDITIONS – OCTOBER 2025

LIABILITY & INDEMNITY

- The school has an appropriate level of insurance and reflects the level of risk associated with supporting medical conditions.
- The school recognises that the insurance policy should provide liability cover relating to administering medication.
- Individual cover may need to be arranged and any requirements of the insurance policy, such as staff training, will be complied with.

COMPLAINTS PROCEDURE

- In the first instance, where there is a concern or query, we would urge parents to discuss matters with the SENCO / SLT with the hope that this could be addressed and resolved accordingly.
- If parents/carers have concerns or are dissatisfied with the support provided they should directly contact the school and follow the complaint procedure set by the school.

LEGISLATION & GUIDANCE

This policy and guidance has been compiled using recommended government documents and Acts, these include:

- ✓ Relevant Legislation Children and Families Act 2014 – Part 5: 100
- ✓ Education Act 1996
- ✓ Health and Safety at work Act 1974
- ✓ Health and Safety: advice for schools – June 2014
- ✓ Medicines Act 1968
- ✓ Misuse of Drugs Act 1971
- ✓ Regulation 5 of the School Premises (England) Regulation 2012 (as amended)
- ✓ Special Educational Needs and Disability Code of Practice: 0-25 years (2015)
- ✓ Supporting pupils with Medical Conditions – December 2015
- ✓ The management of Health and Safety at work regulations 1999
- ✓ The Local Authority will provide both national and local guidance.

For further information and guidance see;

<https://www.gov.uk/government/publications/supporting-pupils-at-school-with-medical-conditions-3>

<https://www.gov.uk/government/publications/emergency-asthma-inhalers-for-use-in-schools>

<https://www.gov.uk/government/publications/automated-external-defibrillators-aeds-in-schools>



SUPPORTING CHILDREN WITH MEDICAL CONDITIONS – OCTOBER 2025

Safeguarding Legislation

Children's Act 1989 Section 3 and Section 17

Children's Act 2004 Section 10

Education Act 2010 Section 21 and Section 176

Equality Act 2010

The NHS Act 2006 Section 3



SUPPORTING CHILDREN WITH MEDICAL CONDITIONS – OCTOBER 2025

POLICY REVIEW

Supporting Medical Conditions in school policy is regularly reviewed, evaluated, consulted with stakeholders and updated.

- The policy is reviewed, evaluated and updated annually in line with the school's policy review timeline and receives a full consultation with stakeholders.
- Any new government guidance is actively sought and fed into the review, guidance will be provided by Local Authority Officers.
- When evaluating the policy, the school seeks feedback and further consultation on the effectiveness and acceptability of the medical conditions policy with a wide-range of key stakeholders within the school, health settings and with parents/carers and children.

Key stakeholders include:

- ✓ Children
 - ✓ Parents/carers
 - ✓ School nurse and/or school healthcare professionals
 - ✓ Headteacher
 - ✓ Teachers
 - ✓ Special Educational Needs & Disability Coordinator (SENDCO)
 - ✓ Pastoral support staff
 - ✓ First aider
 - ✓ All other school staff
 - ✓ Local emergency care service staff (including accident & emergency and ambulance staff)
 - ✓ Local health professionals
 - ✓ The school employer
 - ✓ School governors
-
- The views of children with various medical conditions are actively sought and considered central to the evaluation process.
 - Parents/carers, school staff, governors, relevant local health staff and any other external stakeholders are informed and regularly reminded about the policy and how they impact on its implementation and review.

DFE Guidance: [Children who cannot attend school due to medical needs](#)

Liverpool City Council: [Supporting pupils at school with medical conditions](#)

Liverpool City Council: [SEND Local Offer](#)



SUPPORTING CHILDREN WITH MEDICAL CONDITIONS – OCTOBER 2025

POLICY WRITTEN: September 2025

SHARED WITH GOVERNORS: October 2025

STAFF RESPONSIBLE: Mrs L McCormick

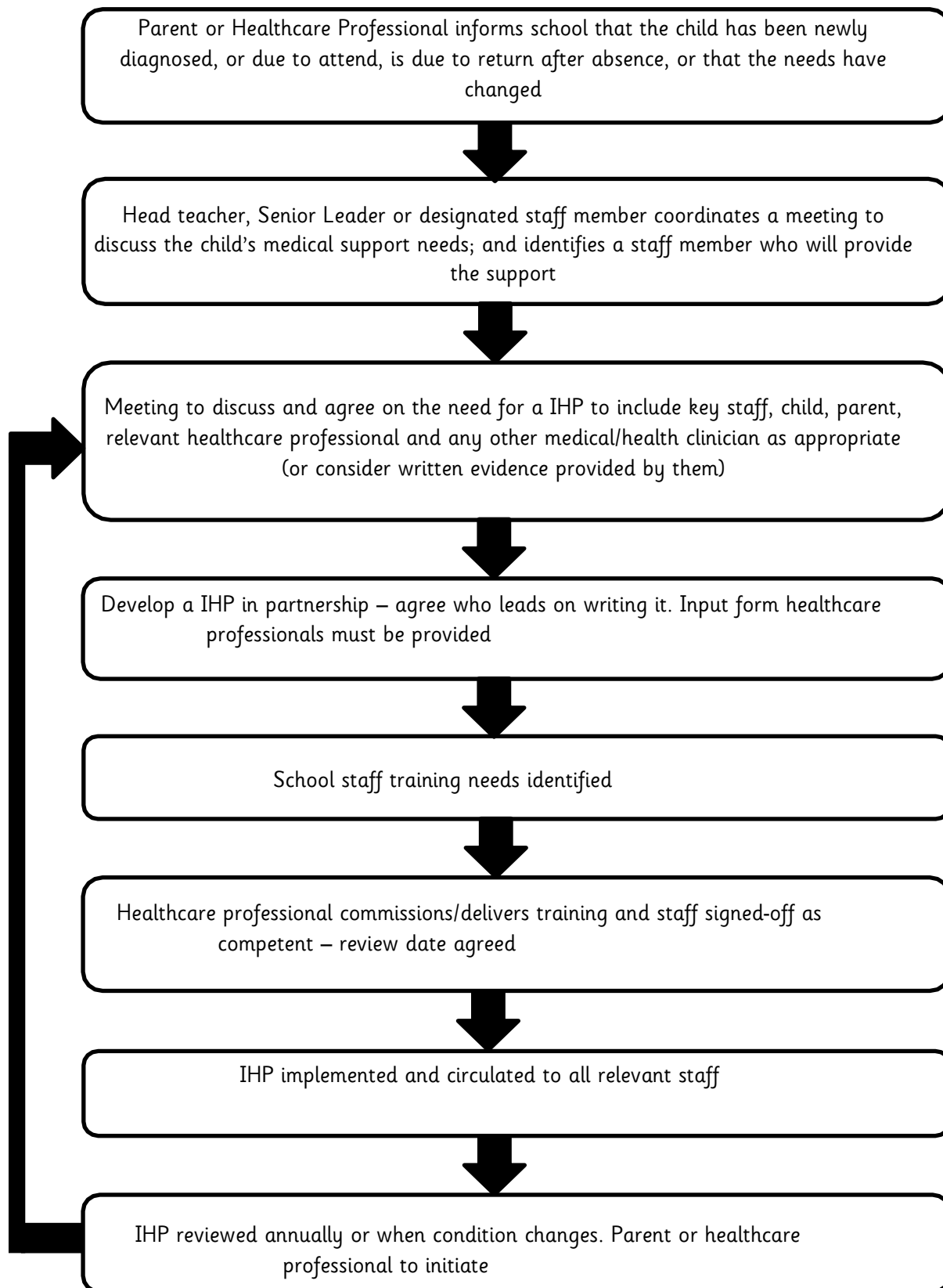
NEXT REVIEW: October 2026



SUPPORTING CHILDREN WITH MEDICAL CONDITIONS – OCTOBER 2025

Annexe A: Model Process for IHP

ANNEXE A: MODEL PROCESS FOR DEVELOPING THE INDIVIDUAL HEALTHCARE PLAN





SUPPORTING CHILDREN WITH MEDICAL CONDITIONS – OCTOBER 2025

Annexe B: Individual Healthcare Plan

ANNEXE B: INDIVIDUAL HEALTHCARE PLAN

Child's name		
Date of birth		
Address		
Medical diagnosis/condition: (Confirmed by health professional)		
Health Professionals Supporting the Child		
Type of professional (GP, hospital, consultant, clinic)	Name	Contact number

Medical Needs	
Describe the medical needs	
Detail of child's symptoms, triggers and signs to look out for	
Treatments	
Name/type of medication	Expiry date
Dosage	
Self-Administered/ Administrated	
Side effects of the medication	

Medical Emergencies
What consitutes a medical emergency for your child?
What action should be taken if this should happen?



SUPPORTING CHILDREN WITH MEDICAL CONDITIONS – OCTOBER 2025

In the event of intervention by the emergency services who will accompany/support the child until the parent/carer arrives?

Who to contact in an emergency

Name	Relationship
------	--------------

Emergency contact number	Mobile
--------------------------	--------

Name	Relationship
------	--------------

Emergency contact number	Mobile
--------------------------	--------

Strategies required to meet the child's additional need

Daily care	Special precautions
------------	---------------------

Equipment	Is a PEP required? <i>To be completed by school</i>	Yes	No
-----------	--	-----	----

Key person *(to be completed by school):*

Date of plan: Autumn 2024	Review date: Autumn 2025
---------------------------	--------------------------



SUPPORTING CHILDREN WITH MEDICAL CONDITIONS – OCTOBER 2025

Annexe C: Record of Medicine administered to individual child

Organisation:		Site/place:			
Name of person receiving/taking medication:		Self-administration? Delete as applicable		YES	NO
Parent/carer agreement for organisation to administer medicine received? Delete as applicable				YES	NO
Complete all sections. Use one form per medication per day.					
Name/type of medicine (as described on the container)					Date:
Time	Dose	Name of staff member		Signature of staff member	
Notes:					
Time	Dose	Name of staff member		Signature of staff member	
Notes:					
Time	Dose	Name of staff member		Signature of staff member	
Notes:					

ADMINISTRATION OF MEDICATION RECORD BOOK © First Aid Forms 2015. All rights reserved. www.firstaidforms.co.uk TO REORDER E: info@firstaidforms.co.uk



**SUPPORTING CHILDREN WITH MEDICAL CONDITIONS –
OCTOBER 2025**

**Annexe D: Staff Training Record – Administration of
Medication**

Name of school / setting	
Name	
Type of training received	
Date of training completed	
Training provided by	
Profession and title	

I confirm that (name of member of staff) has received the training detailed above and is competent to carry out any necessary treatment. I recommend that the training is updated (suggested date)

Trainer's signature: _____

Date: _____

I CONFIRM THAT I HAVE RECEIVED THE TRAINING DETAILED ABOVE.

Staff signature: _____

Date: _____

Suggested review date: _____



SUPPORTING CHILDREN WITH MEDICAL CONDITIONS – OCTOBER 2025

Annexe E: Contacting the Emergency Services

Request an ambulance - dial 999, ask for an ambulance and be ready with the information below.

Speak clearly and slowly and be ready to repeat information if asked.

YOUR TELEPHONE NUMBER:

St. Sebastian's: 0151 260 9697

YOUR NAME (AS APPROPRIATE)

YOUR LOCATION AS FOLLOWS:

St. Sebastian's Catholic Primary School, Holly Road, L7 0LH

STATE WHAT THE POSTCODE IS – PLEASE NOTE THAT POSTCODES FOR SATELLITE NAVIGATION SYSTEMS MAY DIFFER FROM THE POSTAL CODE

St. Sebastian's Catholic Primary School, L7 0LH

PROVIDE THE EXACT LOCATION OF THE PATIENT WITHIN THE SCHOOL SETTING

PROVIDE THE NAME OF THE CHILD AND A BRIEF DESCRIPTION OF THEIR SYMPTOMS

INFORM AMBULANCE CONTROL OF THE BEST ENTRANCE TO USE AND STATE THAT THE CREW WILL BE MET AND TAKEN TO THE PATIENT

PROVIDE THE AMBULANCE SERVICE WITH A COPY OF THE CHILD/YOUNG PERSON'S INDIVIDUAL HEALTHCARE PLAN IF AGREED BY THE PARENT

PUT A COMPLETED COPY OF THIS FORM BY THE PHONE



**SUPPORTING CHILDREN WITH MEDICAL CONDITIONS –
OCTOBER 2025**

Annexe F: Letter to contribute to IHP Review

Dear Parent

Thank you for informing us of your child's medical condition. I enclose a copy of a guide of your responsibilities and the full policy for supporting pupils at school with medical conditions can be found on the school website.

An individual healthcare plan now has to be prepared/reviewed. This will set out what support the each pupil needs and how this will be provided. We will develop this plan with you, your child and the healthcare professionals who can advise us on your child's medical case.

We would like to hold a meeting to start developing the plan on xx/xx/xx. Please can you contact us to let us know if this convenient and to agree who needs to attend or provide information for the meeting.

To confirm your attendance or if you would like to discuss this further please call me on xxxx xxx xxxx or ask to speak to me in school.

Yours sincerely

Mrs J McCormick (Headteacher: St. Sebastian's)



SUPPORTING CHILDREN WITH MEDICAL CONDITIONS – OCTOBER 2025

Annexe G: Parent Guide

The school will support your child with their medical needs but to do this we ask that you;

- tell us if your child has a medical condition
- work with us to ensure your child has a complete and up-to-date Healthcare Plan for their child
- inform us about the medication your child requires during school hours
- inform us of any medication your child requires while taking part in educational visits or residential visits, especially when these include overnight stays
- tell us about any changes to your child's medication, what they take, when, and how much
- inform us of any changes to your child's condition
- ensure your child's medication and medical devices are labelled with their full name and date of birth and a supply a spare provided with the same information
- ensure that your child's medication is within expiry dates
- inform us if your child is feeling unwell
- ensure your child catches up on any school work they have missed
- ensure your child has regular reviews about their condition with their doctor or specialist healthcare professional and information that will require us to support your child is passed on ASAP
- Ensure your child has a written care/self-management plan from their doctor or specialist healthcare professional to help them child manage their condition.